
HOMESITE 6

4 BED | 3.5 BATH



SUMMERWELL

O N M E R C E R I S L A N D

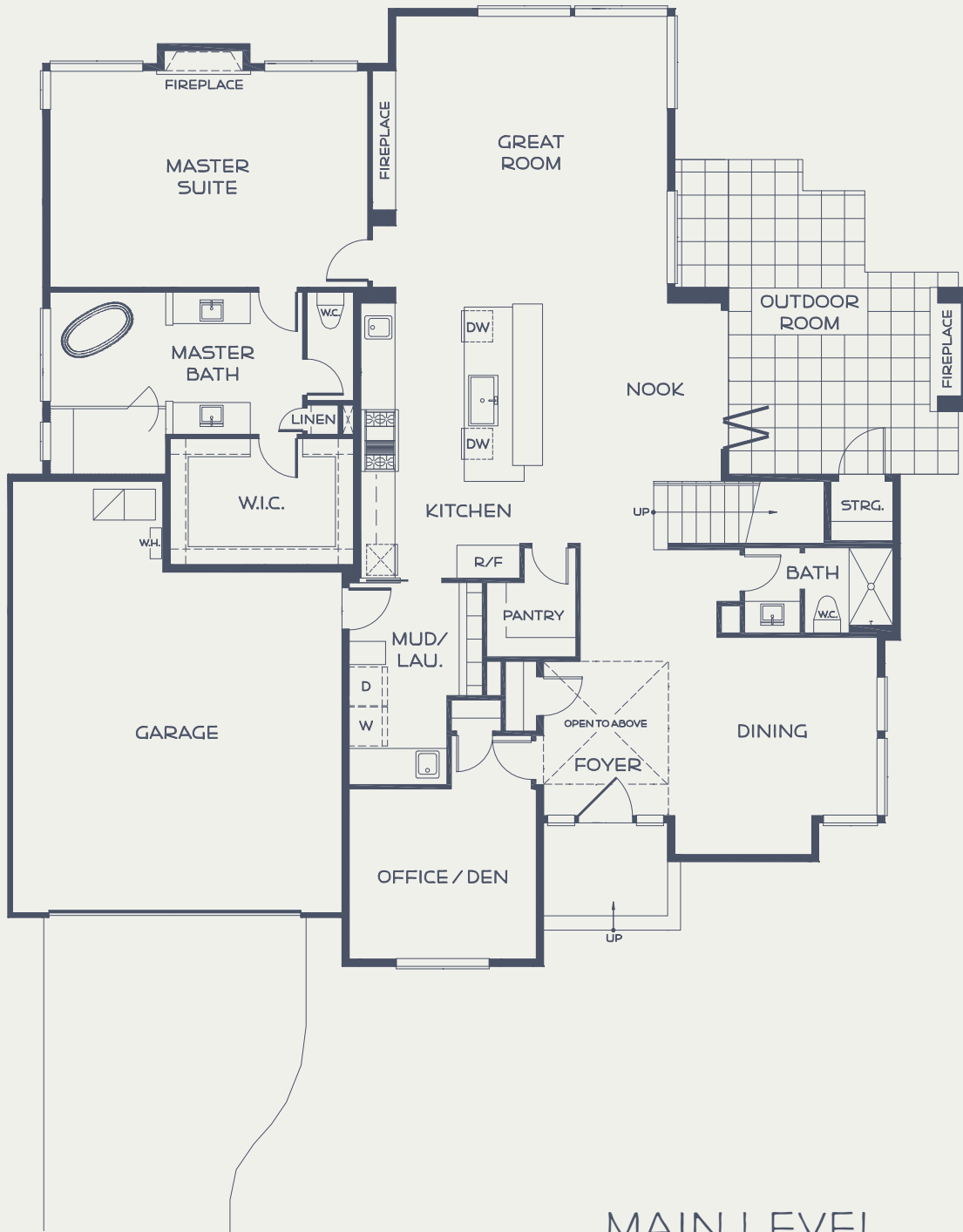
ARCHITECT
DESIGNED.
CUSTOM
QUALITY.

visit us online at

summerwellhomes.com

For more information, call

206.317.7758



MAIN LEVEL

HOMESITE 6

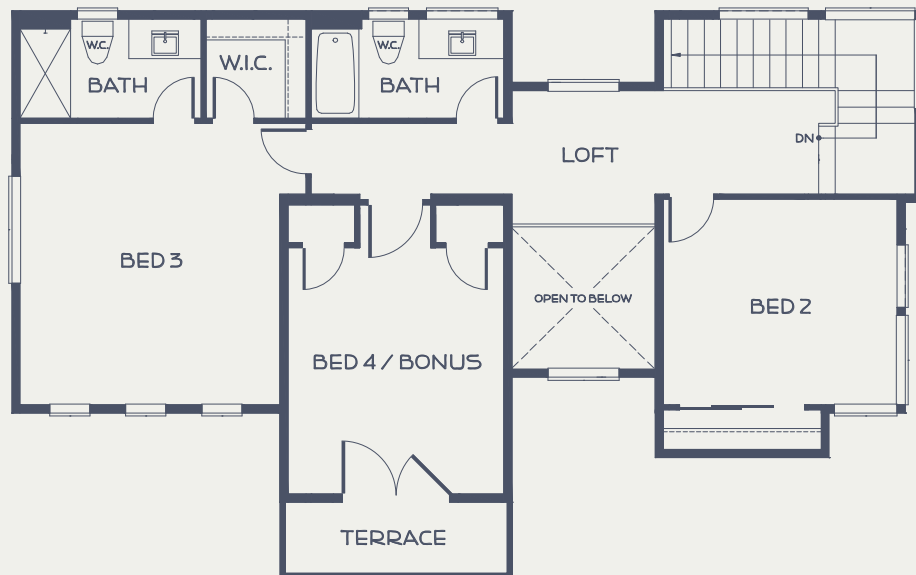
3,244 SQFT

4 BED | 3.5 BATH

OUTDOOR LIVING 190 SQFT

GARAGE 540 SQFT

LOT 9,839 SQFT



UPPER LEVEL

*“Study nature,
love nature,
stay close to nature.
It will never fail you.”*

– FRANK LLOYD WRIGHT

Architecture:
MCCULLOUGH
ARCHITECTS

Interior Design:
SIX WALLS

Landscape Architects:
THOMAS RENGSTORF
& ASSOCIATES

Home Builder:
WINDSOR
CONSTRUCTION

8351 SE 31st Street
Mercer Island, WA 98040
206.317.7758
summerwellhomes.com



SUMMERWELL
ON MERCER ISLAND

In our continuing effort to improve the design and function of our homes, we reserve the right to modify or change plans, specifications, and features without notice. Square footages are approximate. Images are for illustrative purposes only and may differ from the actual home and views.

Represented by
**Coldwell Banker Bain (Mercer Island) &
Avenue Properties (Bellevue)** 