

---

# HOMESITE 7

4 BED | 4 BATH



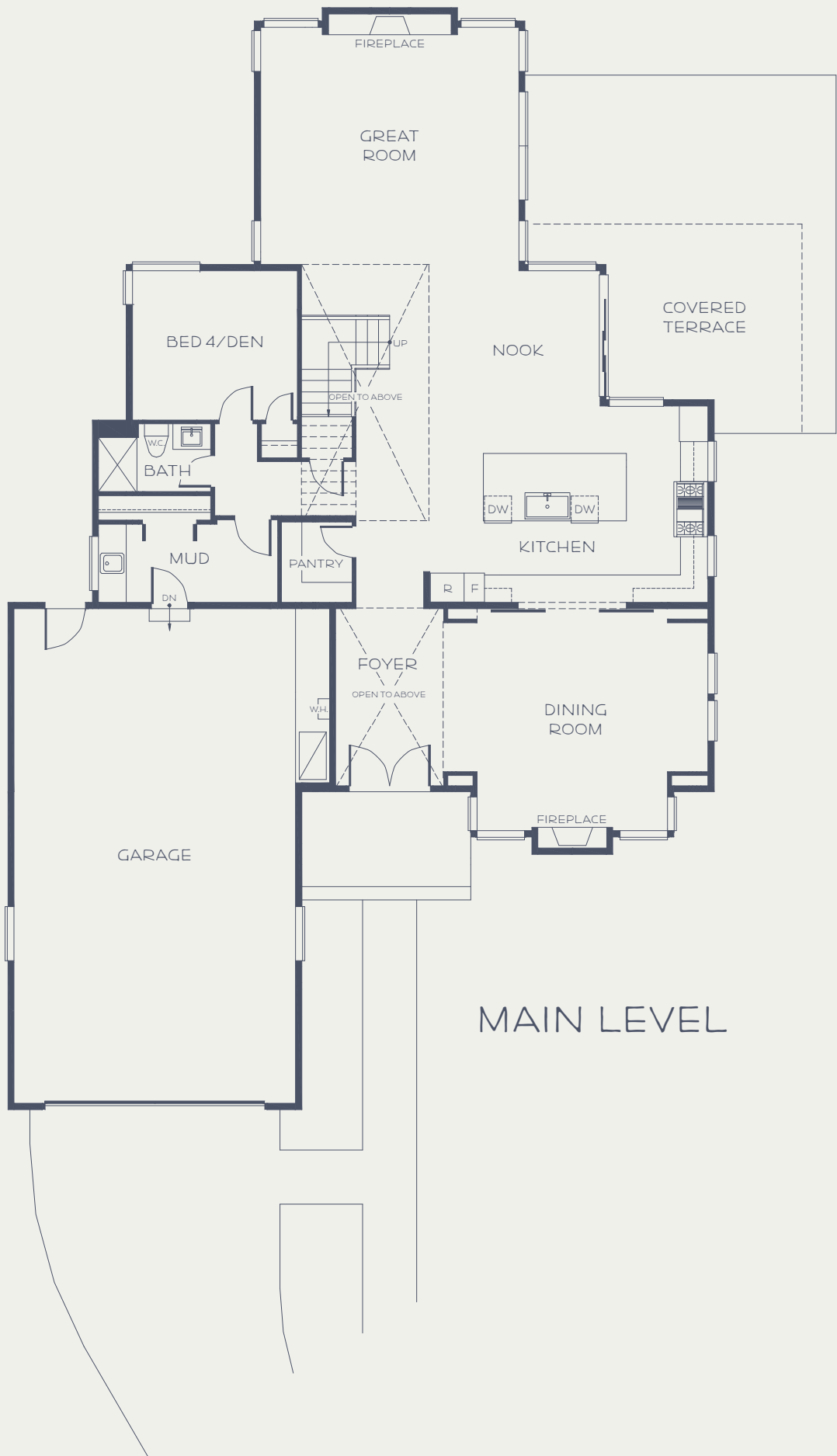
# SUMMERWELL

O N M E R C E R I S L A N D

ARCHITECT  
DESIGNED.  
CUSTOM  
QUALITY.

visit us online at  
[summerwellhomes.com](http://summerwellhomes.com)

For more information, call  
206.317.7758



MAIN LEVEL

---

# HOMESITE 7

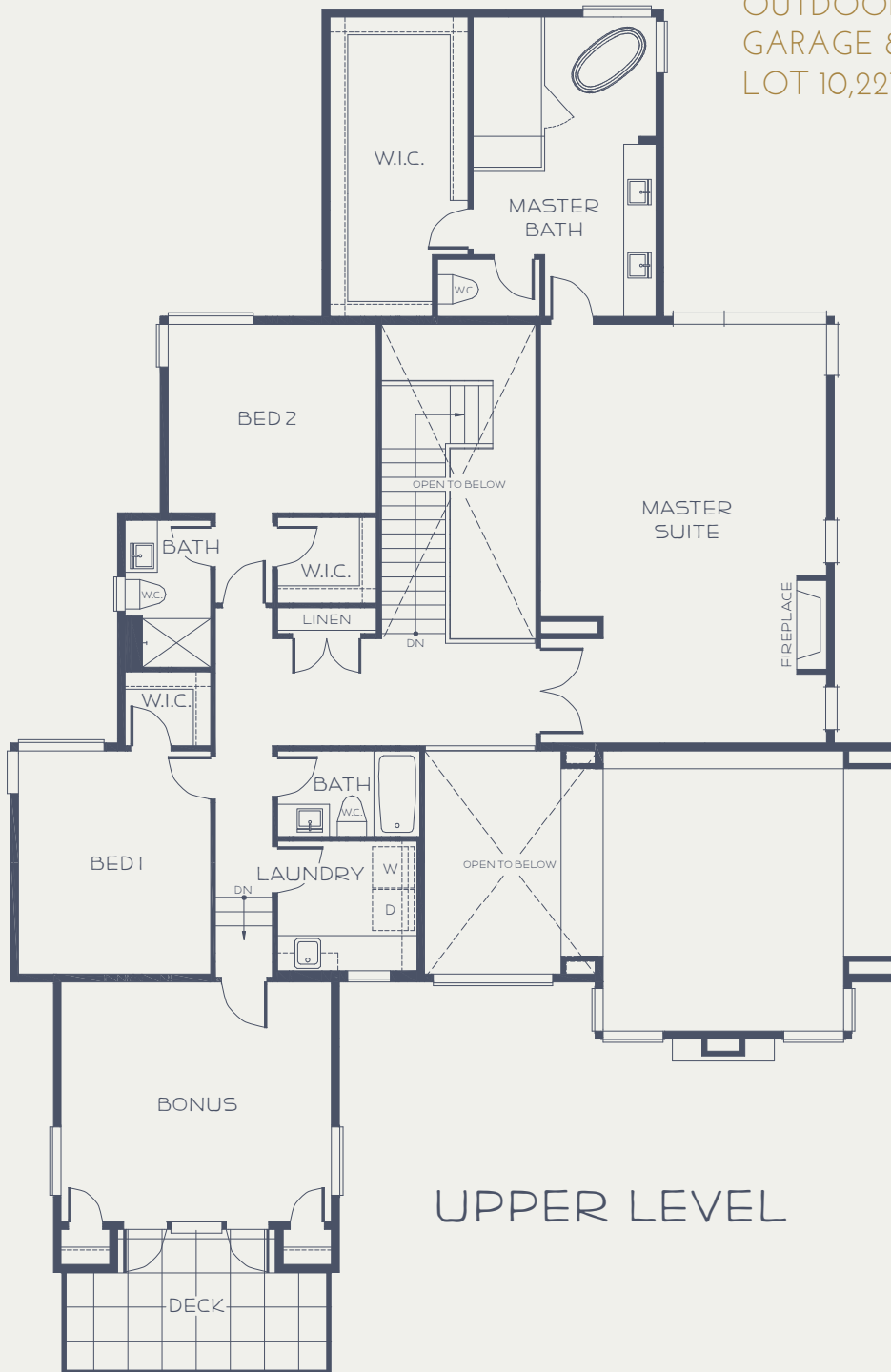
3,728 SQFT

4 BED | 4 BATH

OUTDOOR LIVING 222 SQFT

GARAGE 836 SQFT

LOT 10,221 SQFT



## UPPER LEVEL

*“Architecture should speak of its time and place,  
but yearn for timelessness.”* – FRANK GEHRY

Architecture:  
MCCULLOUGH  
ARCHITECTS

Interior Design:  
SIX WALLS

Landscape Architects:  
THOMAS RENGSTORF  
& ASSOCIATES

Home Builder:  
WINDSOR  
CONSTRUCTION

8361 SE 31st Street  
Mercer Island, WA 98040  
206.317.7758  
summerwellhomes.com



**SUMMERWELL**  
ON MERCER ISLAND

*In our continuing effort to improve the design and function of our homes, we reserve the right to modify or change plans, specifications, and features without notice. Square footages are approximate. Images are for illustrative purposes only and may differ from the actual home and views.*

Represented by  
**Coldwell Banker Bain,**  
Mercer Island 