

---

# HOMESITE 3

5 BED | 4.5 BATH



# SUMMERWELL

O N M E R C E R I S L A N D

ARCHITECT  
DESIGNED.  
CUSTOM  
QUALITY.

visit us online at  
[summerwellhomes.com](http://summerwellhomes.com)

For more information, call  
206.317.7758



MAIN LEVEL

HOMESITE 3

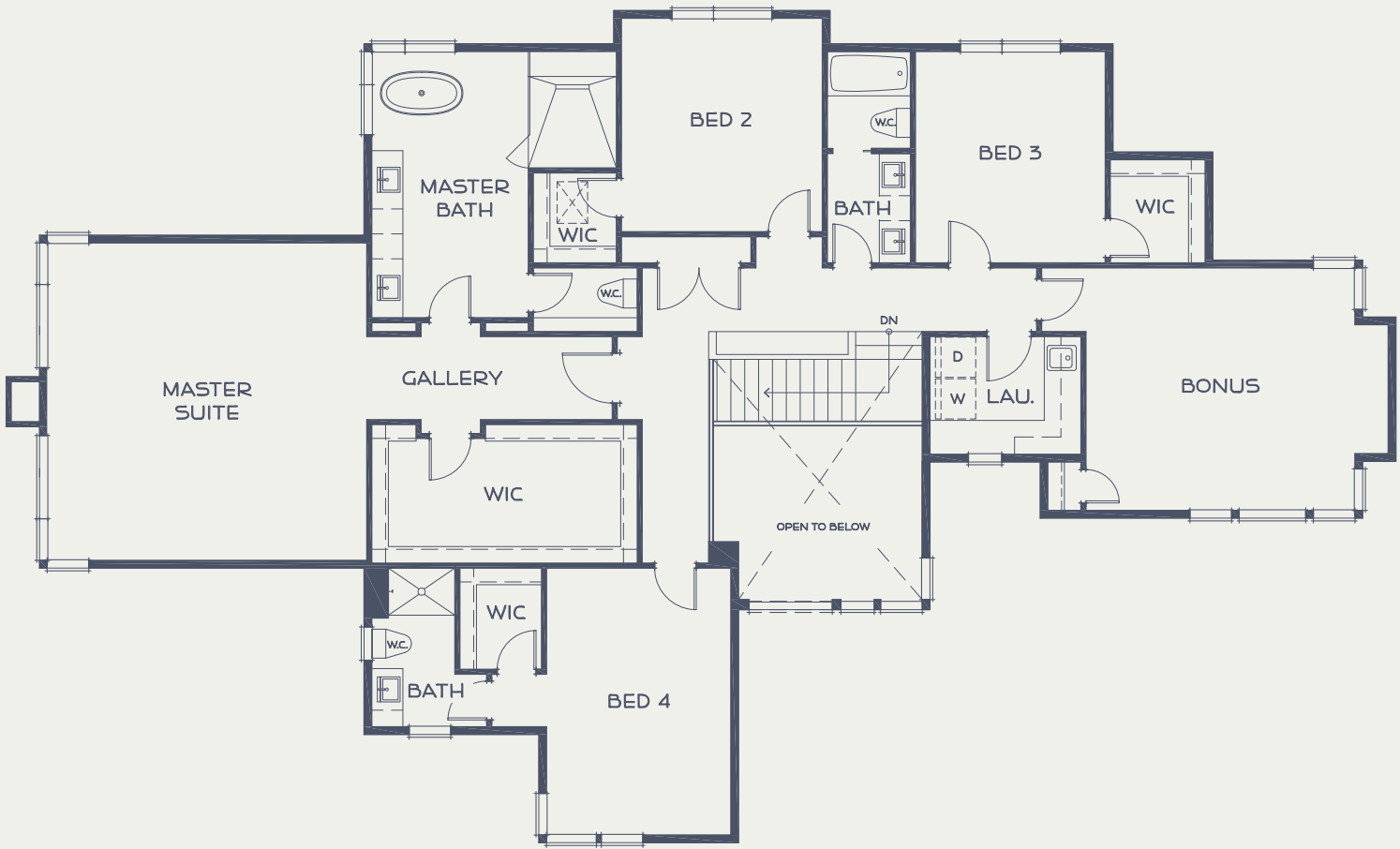
4,253 SQFT

5 BED | 4.5 BATH  
+ BONUS

OUTDOOR LIVING 643 SQFT

GARAGE 776 SQFT

LOT 14,007 SQFT



UPPER LEVEL

*“You employ stone, wood, and concrete, and with these materials, you build houses and palaces. That is construction. Ingenuity is at work. But suddenly you touch my heart, you do me good, I am happy, and I say: ‘This is beautiful.’ That is Architecture. Art enters in.” – LE CORBUSIER*

Architecture:  
MCCULLOUGH  
ARCHITECTS

Interior Design:  
SIX WALLS  
INTERIOR DESIGN

Landscape Architects:  
THOMAS RENGSTORF  
& ASSOCIATES

Home Builder:  
WINDSOR  
CONSTRUCTION

8356 SE 31st Street  
Mercer Island, WA 98040  
206.317.7758  
summerwellhomes.com



**SUMMERWELL**  
ON MERCER ISLAND

In our continuing effort to improve the design and function of our homes, we reserve the right to modify or change plans, specifications, and features without notice. Square footages are approximate. Images are for illustrative purposes only and may differ from the actual home and views.

Represented by  
**Coldwell Banker Bain, Mercer Island** 